



## Off-market Sales

Land Development Corporation's experienced staff are available to provide advice and assistance to identify strategic industrial sites to meet developers specific land requirements.

The Land Development Corporation has access to significant areas of land adjacent to the railway, in close proximity to the East Arm Wharf or in the future gas-based industrial estate on Middle Arm Peninsula.

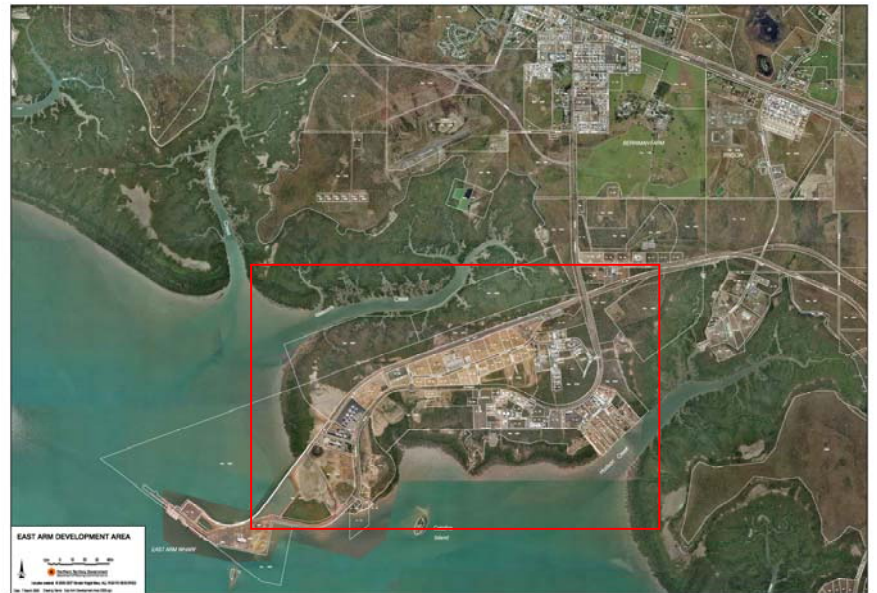


Image: Approximate East Arm development area

Strategic areas are offered on a leased basis with an annual rental fee.

The time frames, method of supply of services, and access are negotiated for each project.

Lease terms are negotiated to suite the developers requirements and are assessed against the level of investment of the development.

Licences are available for short term rental requirements for any length from one month to one year, on a commercial rental per square metre basis.

Leases are available for periods from one to 35 years on a commercial rental basis. Rentals are adjusted in accordance with CPI for four years. In the fifth year a new market rental is obtained. Annual CPI adjustments are made each year to avoid steep rental rises.

No premium up-front payments are required for leased areas.

## Strategic land in the Northern Territory, Australia



**T:** +61 8 8944 0900 | **F:** +61 8 8944 0916 | **E:** [landdevcorp@nt.gov.au](mailto:landdevcorp@nt.gov.au)  
**A:** 35 Export Drive, East Arm, Berrimah, NT, 0828 | **W:** [www.landdevcorp.nt.gov.au](http://www.landdevcorp.nt.gov.au)